



 NEVER COMPROMISE ON QUALITY AND SAFETY

HOME ELEVATOR

 **Schneider**TM
Lift & Escalator
Since 1992
www.asia-schneider.com 02 948 1663



STANDARD CABIN FOR HOMELIFT

*Actual Product might differ from pictures.

CAR CEILING

ASC-G-03 Integrated Hairline Stainless Steel
with Acrylic Lights

CAR DOOR

304 Hairline Stainless Steel

COP & HOP

ASCP-A-01 304 Hairline Stainless Steel
with Blue LCD Screen

CAR WALL

304 Hairline Stainless Steel

LANDING DOOR

304 Hairline Stainless Steel

CAR FLOOR

ASF-G-01 PVC Floor



TEMPERED GLASS CABIN FOR HOMELIFT

*Actual Product might differ from pictures.

CAR CEILING

Integrated Hairline Stainless Steel
with Acrylic Lights

CAR DOOR

Laminated Tempered Glass
with Hairline Stainless Steel frame

COP & HOP

ASCP-A-01 304 Hairline Stainless Steel
with Blue LCD Screen

CAR WALL

Laminated Tempered Glass
with Hairline Stainless Steel frame

LANDING DOOR

Laminated Tempered Glass
with Hairline Stainless Steel frame

CAR FLOOR

ASF-G-01 PVC Floor

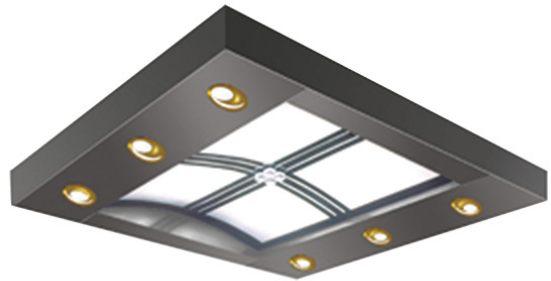
CAR CEILINGS



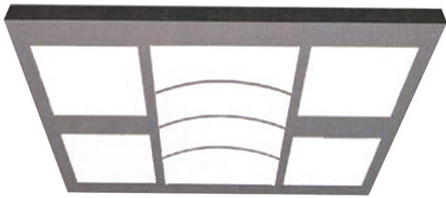
ASC-G-01



ASC-G-02



ASC-G-03



ASC-M-01



ASC-M-02



ASC-M-03

*Actual Product might differ from pictures.

ASC-G-01

Integrated Hairline Stainless Steel
with LED Lighting

ASC-G-02

Integrated Hairline Stainless Steel
with LED Lighting

ASC-G-03

Integrated Hairline Stainless Steel
with LED Lighting

ASC-M-01

Integrated Hairline Stainless Steel
with LED Lighting

ASC-M-02

Integrated Hairline Stainless Steel
with LED Lighting

ASC-M-03

Integrated Hairline Stainless Steel
with LED Lighting

DISPLAY TYPES



DOT-MATRIX



BLUE-SEGMENT
LCD (OPTIONAL)

PUSH BUTTONS



ASB-M-01



ASB-M-02



ASB-M-03



ASB-M-04



ASB-M-05



STANDARD



OPTIONAL

*Actual Product might differ from pictures.

AS-A-HOP 01

Hairline Stainless Steel with
Dot-Matrix LCD Display

AS-A-HOP 02

Hairline Stainless Steel with
Blue-Segment LCD Display

AS-A-COP 01

Hairline Stainless Steel with
Dot-Matrix LCD Display

AS-A-COP 02

Hairline Stainless Steel with
Blue-Segment LCD Display

ASB-M-01

Round Hairline Stainless Steel
with Braille button.

ASB-M-03

Round Hairline Stainless Steel
with Braille button.

ASB-M-02

Round Hairline Stainless Steel
with Goldish background color

ASB-M-04

Square Hairline Stainless Steel.

ASB-M-05

Square Hairline Stainless Steel
with Braille button.

HANDRAILS (Optional)

ASH-M-01



ASH-M-02



ASH-M-03



ASH-M-04

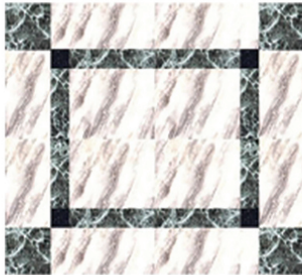


ASH-M-05

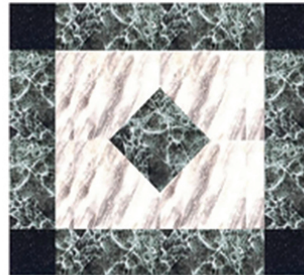


PVC FLOORS

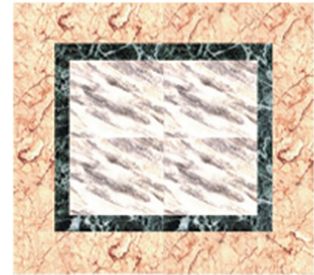
ASF-G-01



ASF-G-02



ASF-G-03



ASF-M-01



ASF-M-02



*Actual Product might differ from pictures.

ASH-M-01
Round Hairline Stainless Steel

ASH-M-02
Round Hairline Stainless Steel

ASH-M-03
Round Hairline Stainless Steel

ASH-M-04
Flat Concaved
Hairline Stainless Steel

ASH-M-05
Flat Semi-Concaved
Hairline Stainless Steel

ASF-G-01
Marble-like PVC

ASF-G-02
Marble-like PVC

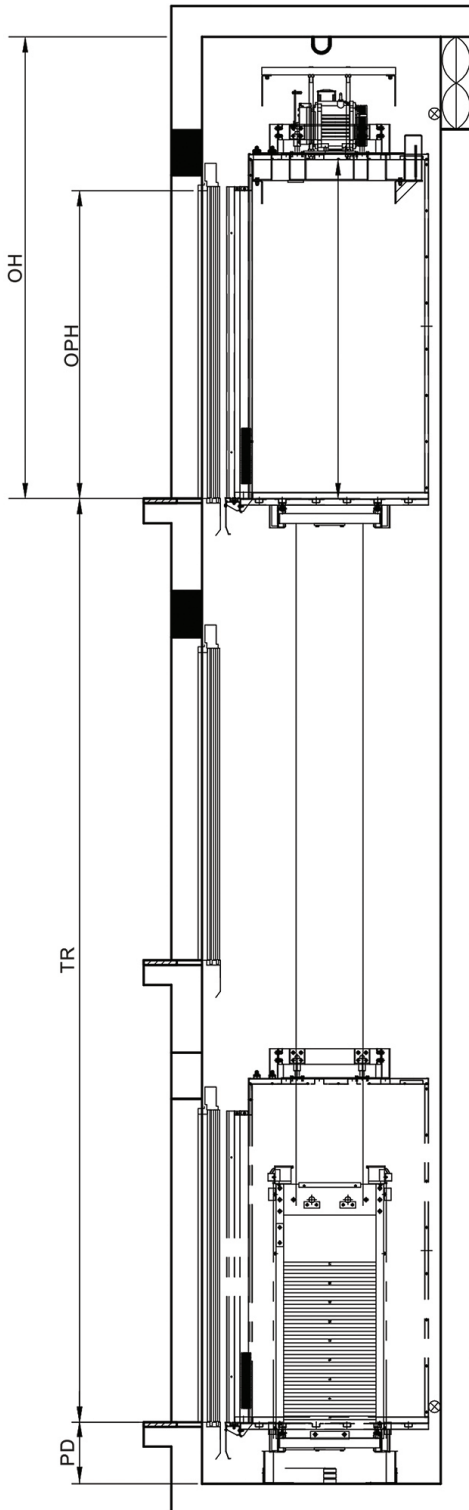
ASF-G-03
Marble-like PVC

ASF-M-01
Marble-like PVC

ASF-M-02
Marble-like PVC

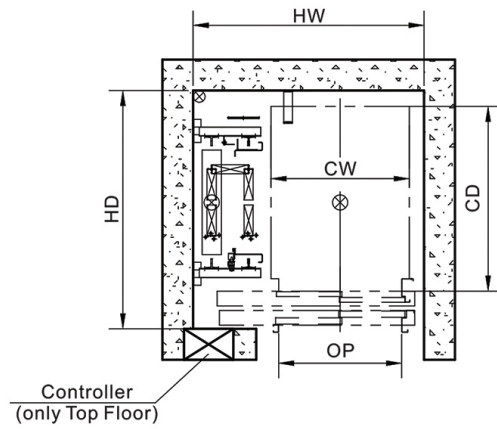
Sample Layout for Home Lift

Hoistway Elevation



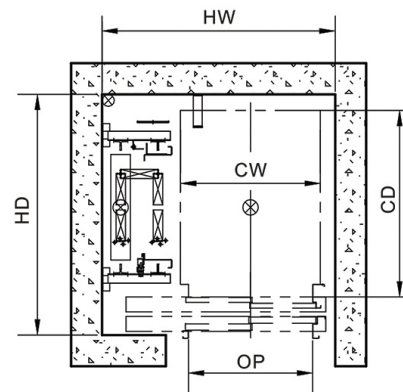
Hoistway Plan

Top Floor



Hoistway Plan

other Floor



Landing (kg)	Rated Speed (m/s)	Car Size (mm) (W x D x H)	Hoistway Size (mm) (W x D)	OH (mm)	PD (mm)	OP (mm) (W x H)	TR (M)Standard
320	0.25-0.4	900 X 1200 X 2200	1500 X 1550	3000	400	800 X 2000	≤15
400	0.25-0.4	1000 X 1250 X 2200	1600 X 1600	3000	400	800 X 2000	≤15

● Motor Power: 1.1 KW ● Power Supply: 220V Single Phase 3.0 KVA